

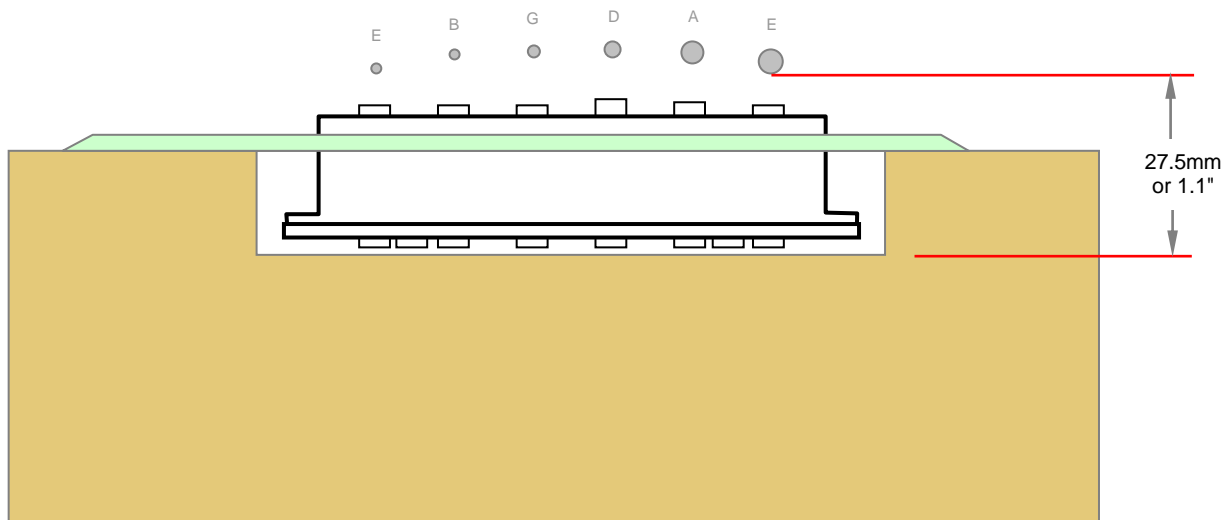
Install requirements and dimensions for Kinman Hx Strat pickups

Rev-2 Oct-09 Page 1 of 2

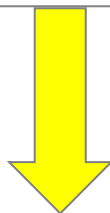
There should be a minimum of 25.5mm (1.1 inch) between the bottom of the unfretted (open) E strings and the bottom of the cavity, as shown in the diagram below.

As a rough guide ONLY this translates to cavity depth of approximately 17mm but this depends on bridge set-up, neck angle and a number of other factors so cavity depth is not the sole determining factor. The best method is in the first paragraph.

This will provide a gap of approximately 2.5mm between the strings and the top of the magnets when fretted at the 12th (provided the guitar is well set-up). This is a good place for the pickups to be anyway but if the cavity is deeper then so much the better as even more adjustment of the pickups is afforded.



Dimensions



Dimensions of Kinman Hx Strat pickups (not to scale)

